
KIT PART NUMBER
INSTRUCTIONS FOR INSTALLING
Field kit 432 Display Update

CHECK THE PARTS RECEIVED IN THIS KIT WITH THE PARTS LIST IN THESE INSTRUCTIONS. IF ANY PARTS ARE MISSING CONTACT THE PLACE OF PURCHASE.

Read these instructions carefully before installing the kit.
Keep these instructions for part numbers and for future reference.

THIS KIT CONTAINS THE FOLLOWING:

PART NUMBER	DESCRIPTION	QTY
4325083	SEL.PANEL-TOP-MONETARY	1
PCR0012648	ASSY, DISPLAY W/HDC BRACKET	1
6335002	SERVICE KEYPAD ASSEMBLY	1
4322342	INSTRUC, SHOPPER DISPLAY UPDATE KIT , including MONETARY DISPLAY TEMPLATE	1

Tools and Additional Parts Required:

- 1 – ¼" NUT DRIVER
- 1 – METAL CUTTING TOOL
- 4 – 1/2 " WASHERS

! WARNING Electrical Shock Hazard – Turn machine power off while installing this kit. Failure to do so could result in electrical shock.

1. Read these instructions carefully before installing this kit
2. Turn the machine OFF with the main switch. Failure to do so could result in an electrical shock.
3. Open the monetary door and locate the 4 screws and three harness connections on the back side.(Fig. 1)
4. Disconnect the three harnesses (circled in Fig. 1) from the old display.
5. Remove the 4 screws (circled in Fig 1) holding the old top monetary panel in place. Put them aside for later use.
6. Using the provided template, line it up to the four screw holes on the monetary panel.(Fig. 2)

Figure 1



7. Cut the outline of the template as shown in Figure 3.

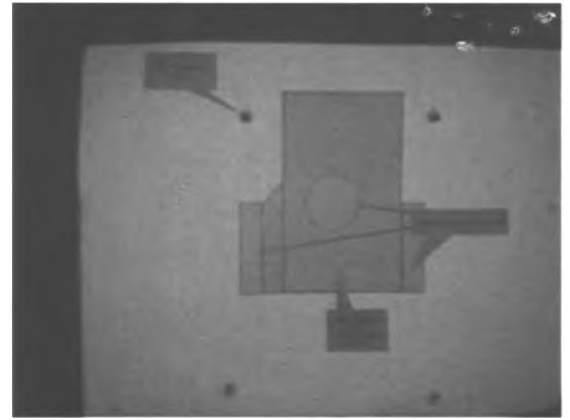


Figure 2

8. Using a metal cutting tool, cut along the template opening to make a hole in the monetary panel large enough for the new display to fit.
Note: Use care when cutting the metal and protect all electronic devices from the potential for metal fragments from the cutting operation to infiltrate these devices, and potentially cause eclectically conductive fragments to cause a short or other damage.

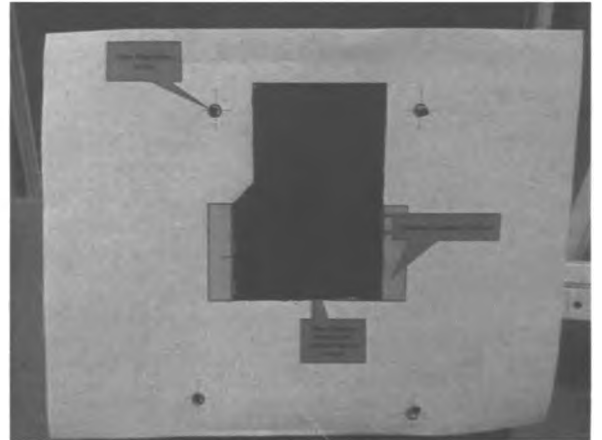


Figure 3

9. On the old display, remove the 6 screws holding it in place and disconnect the service keypad harness. (Fig. 4)



Figure 4

10. Remove the four white spacers, lens bracket and lens from the panel. (Fig 5)

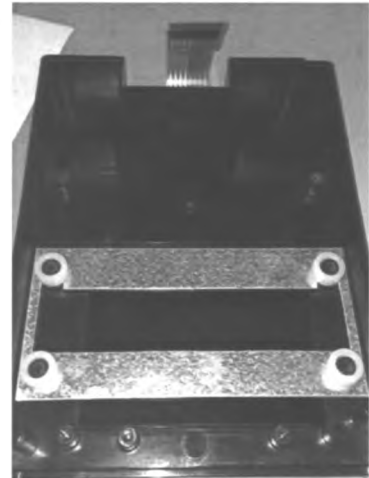


Figure 5

11. Install the lens, bracket and spacers on the new panel as shown.(Fig. 6)

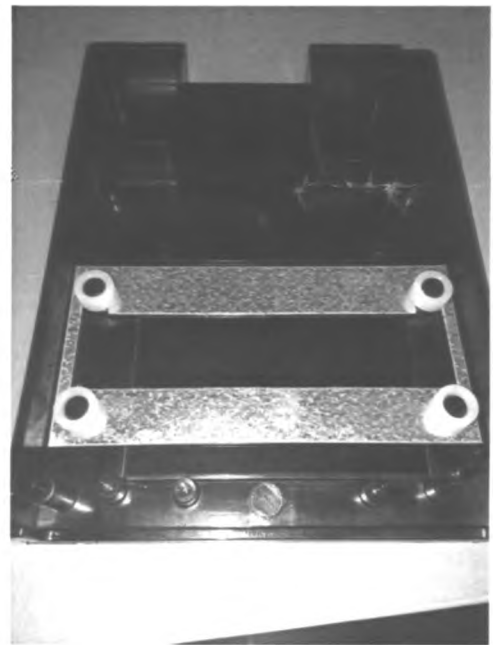


Figure 6

12. Using four 1/2" washers and four screws previously removed from the old panel to secure the lens and bracket to the new panel.

13. Attach the supplied service keypad to the front of the new panel. (Fig. 7)



Figure 7

14. Install the new display on the new panel using two screws from the old panel. (Fig. 8)

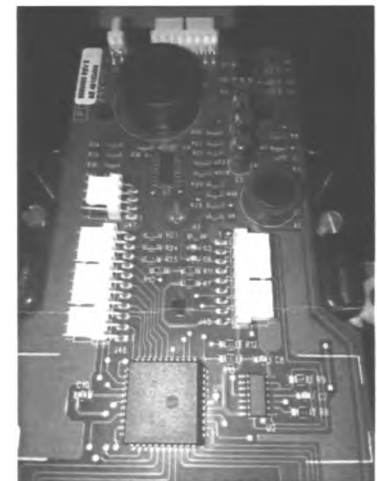


Figure 8

15. Connect the service keypad to the top connector on the new display. (Fig 9)
16. At the machine, attach the three harnesses (door switch, arrow keypad, and controller) to the display, then attach the new panel and display to the monetary panel using the four previously removed screws.
17. Turn power on to the machine. Test functions of the display by entering different service modes.
18. Test machines with money to verify operation
19. Close and lock machine

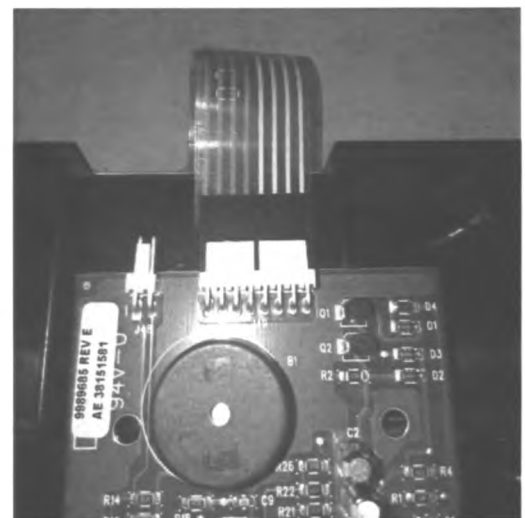
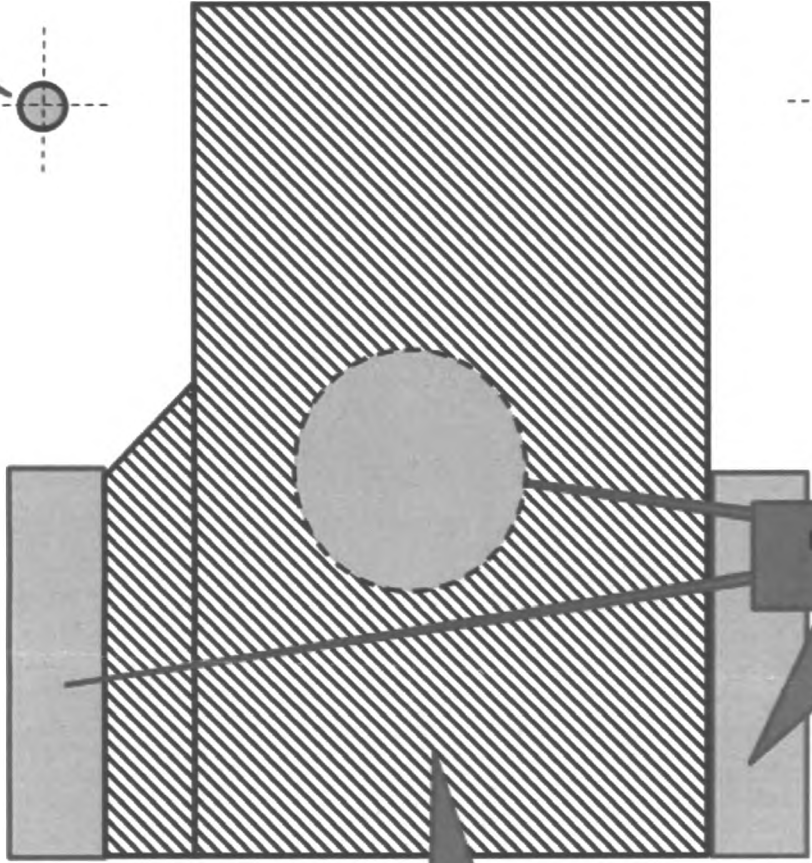


Figure 9

Four Alignment
holes



Existing openings in panel

New Opening
needed for
revised display
board