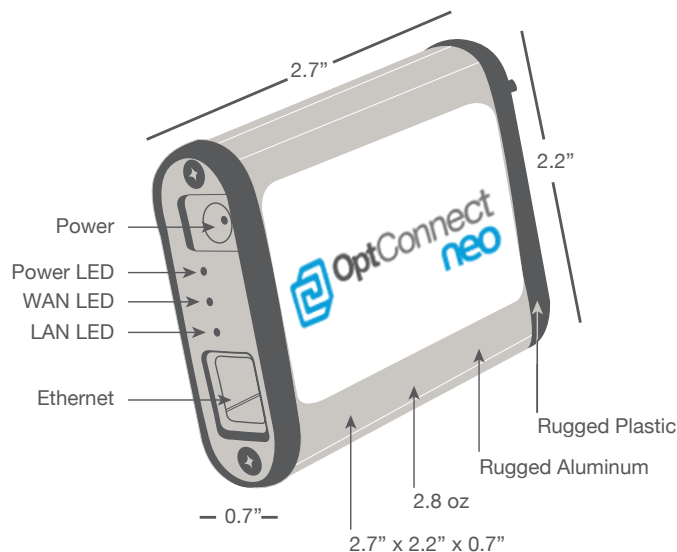


Headache-Free connectivity for your IoT & M2M applications.

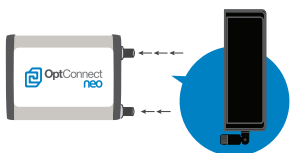


OptConnect neo	
Features	Advantages
<ul style="list-style-type: none"> • Plug-n-play High-speed connectivity • Lightweight 2.8 oz • Compact size 2.7" x 2.2" x 0.7" • Rugged Aircraft grade Aluminum, Temp resistance -40c - +85 	<ul style="list-style-type: none"> • Primary network connectivity for kiosks, signs, POS, ATMs, etc. • Flexible and practical • Modular antennas • Flexible mounting options • Delivers speed and wide coverage (Cellular Technology 4G LTE) • 5v power • Enables remote device connectivity • Save money, time and improve business efficiency • Always on • Low power consumption 4G 10-15 watts peak • Built-in Firewall – 2.2 • DHCP server for local automatic IP assignment – can assign static IPs <ul style="list-style-type: none"> Public and Private IP modes for local IP assignment NAT with VPN Passthru Domain name addressable • Edge decision making – processing – WRT • High-Speed Data Connections
Additional Features	
<ul style="list-style-type: none"> • Cost-effective replacement for landline dialup circuits or analog cell-phones – Primary connectivity for PLCs, RTUs, POS, ATM solutions • Backup/redundant network connections for LANs • High speed data transfer rate • Full duplex transceiver ethernet port • LED network status indicators • Remotely manageable and upgradeable 	



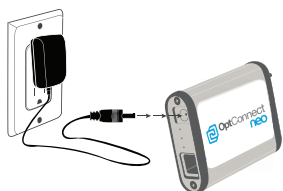
1

Attach antennas.



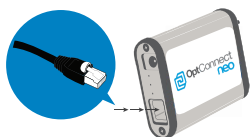
2

Apply power.



3

Plug in Ethernet cable.



4

Plug Ethernet cable into PC or router WAN port.



Wireless WAN

GSM	HSPA+, GPRS, EDGE - 800/850, 900, AWS, 1900, 2100 MHz (PTCRB Approval not complete)
CDMA	EV-DO Rev A and 1xRTT - 800/1900 MHz (Both Approved)
LTE	LTE 700 (B17), 850 (B5) AWS1700 (B4) 1900(B2) MHz LTE 700 (B13), AWS1700 (B4) MHz
WWAN Embedded Module	Telit 910 Series
SIM Slots	1 internal 3FF Micro-SIM Slot
Antenna Connectors	1 x 50 Ω SMA (Center pin: female)

Ethernet

Ports	1
Connector	RJ-45
Standard	IEEE 802.3
Physical Layer	10/100 Base-T
Data Rate	10/100 MBit/s
Mode	Full or Half duplex
Interface	Auto MDI/MDIX

Management

Fully Managed Service	OptConnect Portal
Processor and Memory	Atheros AR9331, 64MB RAM, 16MB FLASH
Protocol Support	HTTP, HTTPS, FTP, SSL

Power

Input	5 VDC (power supply with barrel connector included)
Consumption	Typical: 3.5 W; Max: 15 W

General

LEDs	Power On, LAN Connection, WWAN Service
Relative Humidity	5% to 95% (non-condensing)

Approvals

GSM/CDMA	Verizon ODI
Carrier Certifications	Certified by Verizon and most major carriers

Need more information?

Contact D&S Vending Inc., an OptConnect Certified Partner, at 1-800-445-8363 or jasongreene9@att.net