

## Instructions to Install Retrofit Kit AP120 Machine

**\*\* TURN MACHINE POWER OFF BEFORE INSTALLATION \*\***  
**READ ALL INSTRUCTIONS BEFORE STARTING INSTALLATION**

### RVMC-AP120 Retrofit Kit Contents

PART NAME	QUANTITY	PART NUMBER
PCBA, AP120 Retrofit VMC	1	10-0349-00
Assembly, AP120 OLED Display	1	05-0091-50L
Cable, AP120 OLED Display	1	11-0194-21L
Cable, DEX (long)	1	DEX-27L-01

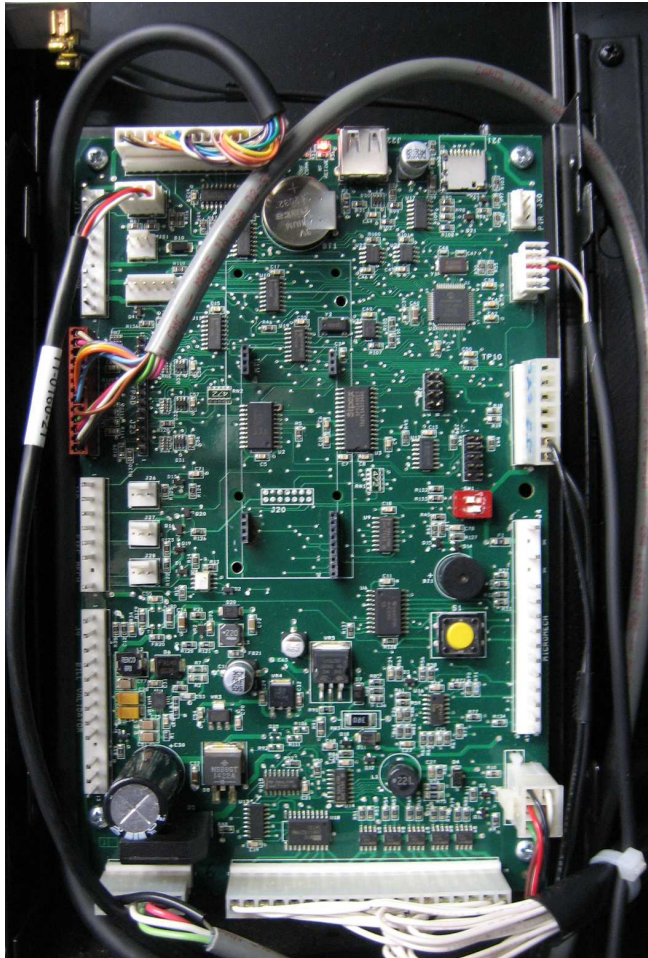
#### Tools Needed:

Screwdriver, Philips (control board & display)  
 Nut Driver, 1/4" and 3/8" (bill validator)  
 Step Drill\* or 15/32" metal drill bit (DEX connector) \*i.e., Unibit #1 (13 hole step drill) or equivalent

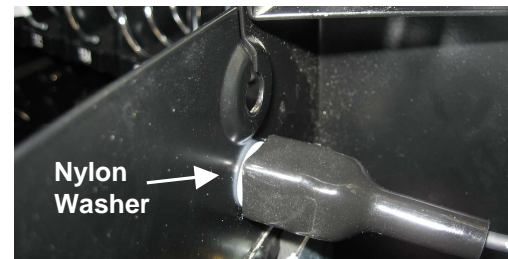
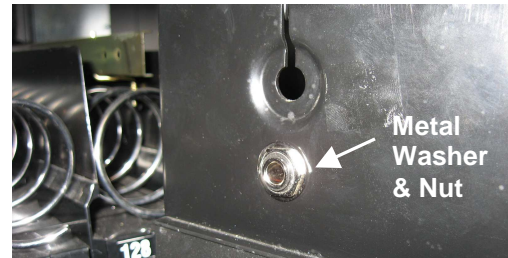
#### Installation Procedure:

1. Unplug all cables from the existing control board. Leave in same positions since all but the display, DEX, and Touch Memory cables will be plugged back into the same locations.
2. Remove the bill validator to gain access to the display, removing cables, and drilling.
3. Remove the display (P12), DEX (P2), and Touch Memory (P1) cables.
4. Remove the metal cover over the existing control board. This will not be used.
5. Unscrew the 4 screws holding the existing control board and remove the board. **Save the screws for installing the new control board in the next step.**
6. Install the new **10-0349-00** control board using the 4 screws from Step 5. The red dip switch, beeper, and yellow service push button should be on the right.
7. Insure that Dip Switch 1 (top) is OFF (to left) and Dip Switch 2 (bottom) is ON (to right).
8. Reconnect all remaining cables into the new controller in the same positions and orientation as on the original controller. Note that the keypad cable goes to the **J7** keypad connector closest to the left board edge. (Labeled **AP120 KEYPAD**).
9. Unscrew the 4 screws holding the existing display and remove it along with the plastic cover. **Save the screws for use installing the new display assembly in Step 14.**
10. Enlarge the lower panel hole (without the slot) where the original DEX connector phone jack was located. Use a step drill or metal drill bit. The new hole size must be **15/32"**. Insure no debris falls into the machine or coin mechanism.
11. Insert the **DEX-27L-01** connector into the panel making sure the nylon washer is between the connector and the panel. It should not be on the side the nut goes on. Secure the connector with the metal washer and nut.
12. Plug the **DEX-27L-01** cable onto the control board's **J2** connector (upper right side).

13. A metal display mask is included in the **05-0091-50L** display assembly. Insert the mask into the cavity behind the existing plastic display lens. The part is completely symmetrical so any orientation is OK.
14. Install the new **05-0091-50L** display assembly using the 4 screws from Step 9. The connector faces up. The foam cushions hold the display mask against the plastic display lens.
15. Connect the new **11-1700-01L** display cable between the control board's **J12** connector (top left) and the new display. The display connector end has a key in position 3.
16. Reinstall the bill validator. **Finished !!**



10-0349-00 Control Board



DEX-27L-01 connector in panel



05-0130-51 Display Mask

**Setup Menu Keypad**  
 Scroll Up – Key 5  
 Scroll Down – Key 8  
 Enter – Key C/CE  
 Cancel – Yellow Service Button



05-0130-50 Display Assembly